



Università degli Studi di Torino

Questionario sulla valutazione della didattica

Anno accademico: 2017/2018

NEUROSCIENZE

Rapporto statistico relativo al Corso di Studi

LAUREA I[^] LIV, IN

**TECNICHE DI NEUROFISIOPATOLOGIA (ABILITANTE ALLA PROFESSIONE DI SANITARIA TECNICA
DI NEUROFISIOPATOLOGIA)**

Valutazione relativa al V Periodo

RAPPRESENTAZIONE GRAFICA DELLE STATISTICHE

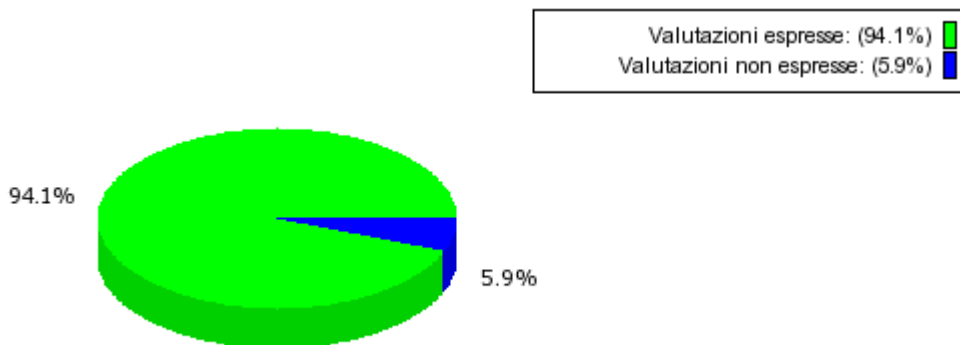
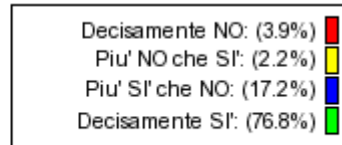
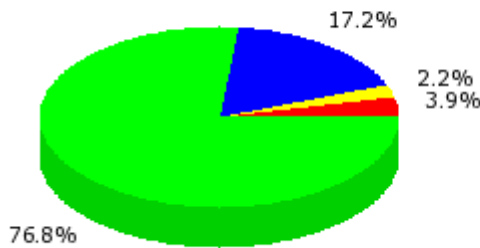
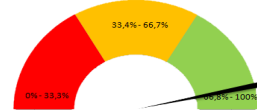
In Edumeter le domande proposte nei questionari possono avere quattro risposte: 2 con valore negativo e 2 con valore positivo. Le risposte negative vengono memorizzate con i valori 1 e 2. Le risposte positive invece con i valori 3 e 4. Tutte le altre risposte sono "neutre" al fine del calcolo della media. Nel calcolo della media delle risposte di una domanda si tiene conto del numero totale di risposte e del numero relativo di ogni risposta. Dato il valore assegnato alle singole risposte, la media ponderata assumerà un valore compreso tra 1 e 4. Per avere una maggiore percezione dell'andamento della media delle risposte, la media ponderata originale viene normalizzata ai valori -1 e 1.

Somma giudizi: Somma dei giudizi raccolti (da 1 a 4).
Valore medio (*): Valore medio sui 4 giudizi (valore tra 1 a 4).
Valore medio ():** Valore medio sui 4 giudizi (valore tra -1 a 1).
Dev. standard: Deviazione standard.
Soddisfazione: Indice di soddisfazione, in percentuale, ottenuto come rapporto tra la somma delle risposte positive (PIU' SI' CHE NO e DECISAMENTE SI) e il totale dei primi quattro giudizi.

Su questo corso di studi si sono espressi 19 studenti

Valore medio (*): 3.67
Valore medio (): 0.78**
Dev. Standard: 0.70

Soddisfazione: 93.98%

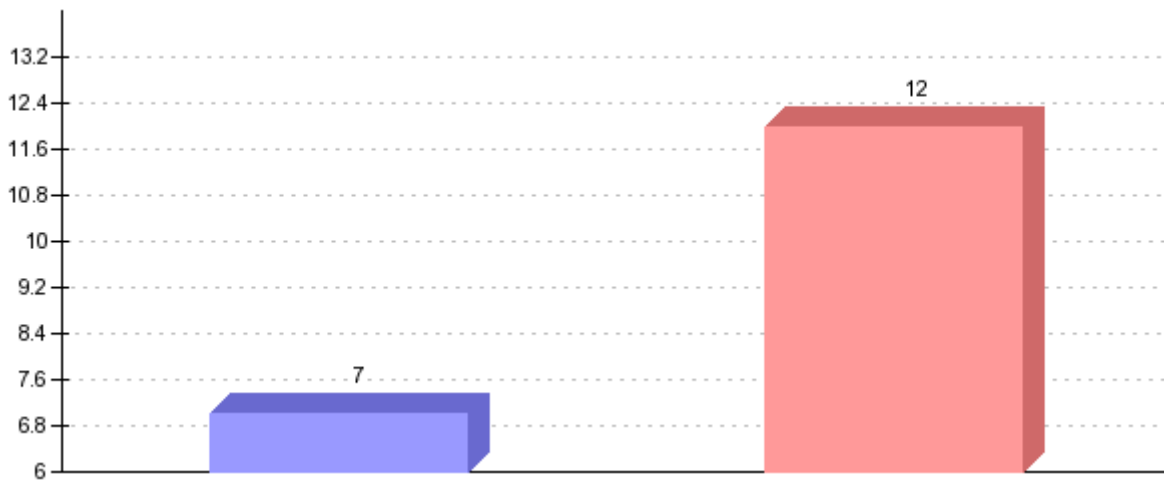
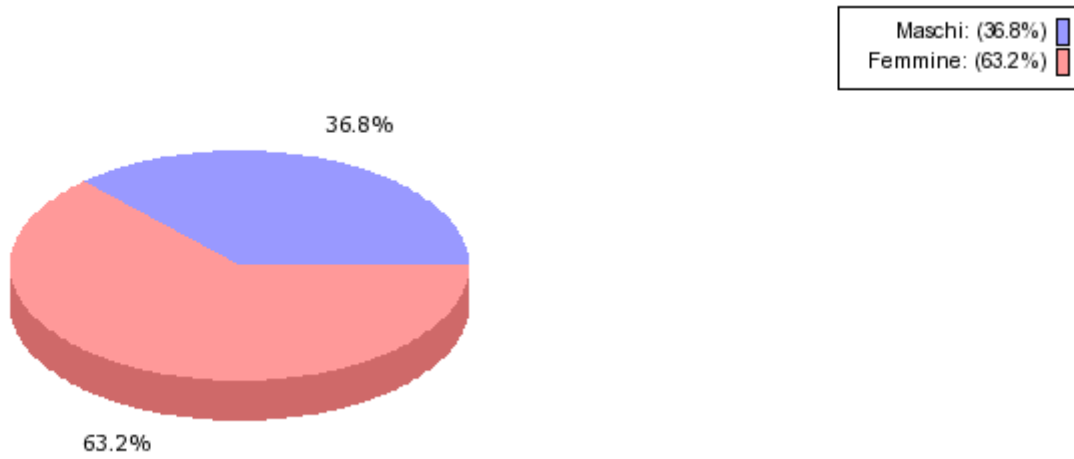


PROFILO PERSONALE - SESSO

M: 7

F: 12

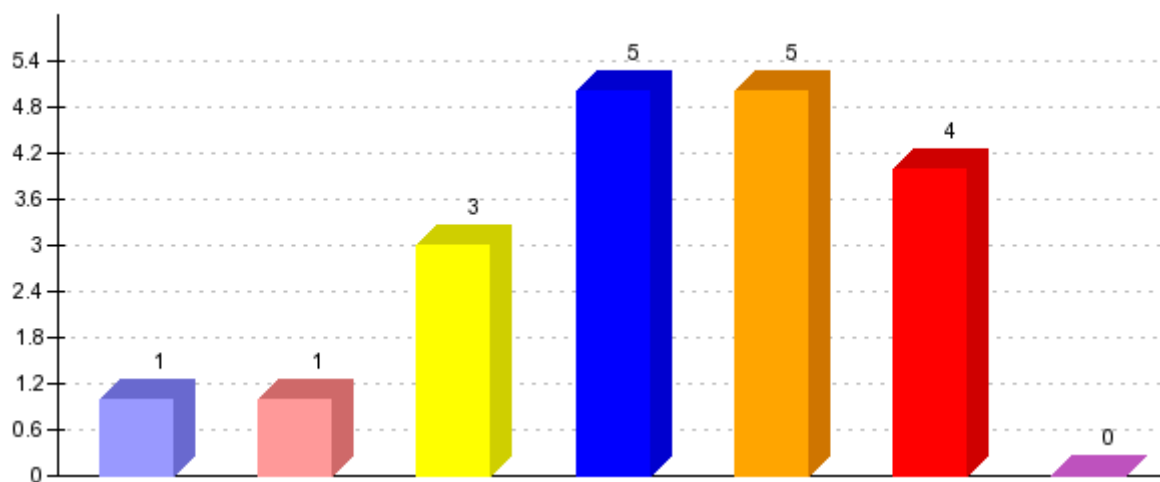
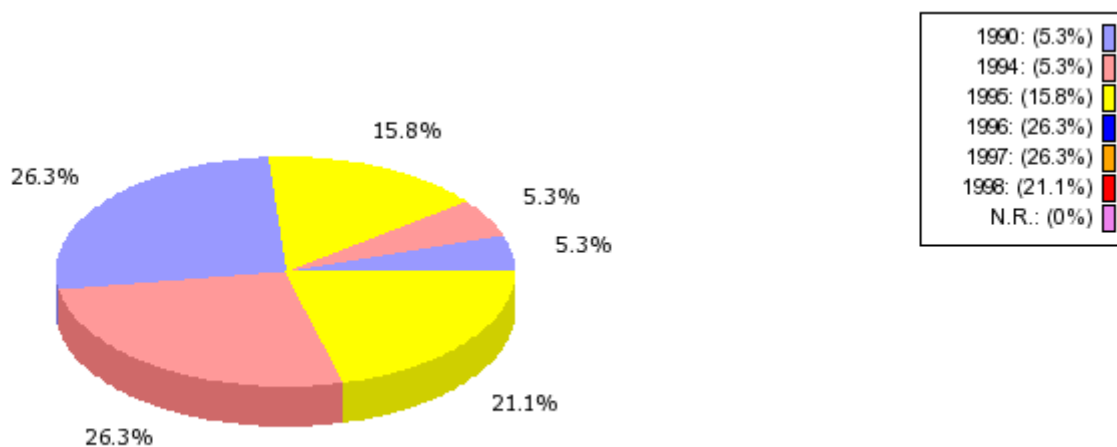
Totale valutazioni: 19



PROFILO PERSONALE - ANNO DI NASCITA

1990: 1
1994: 1
1995: 3
1996: 5
1997: 5
1998: 4
N.R.: 0

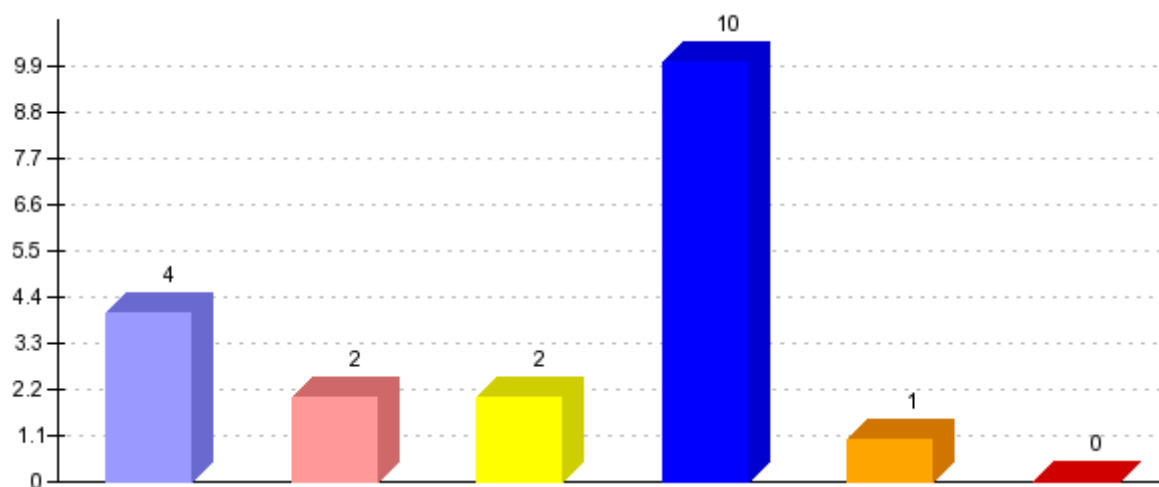
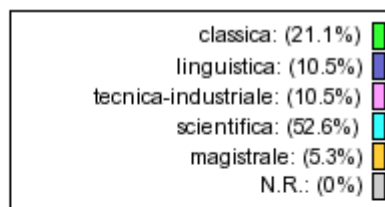
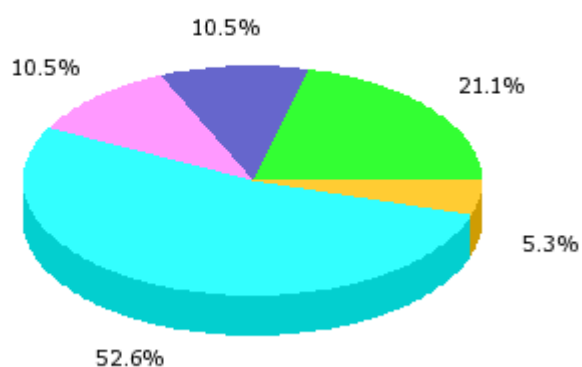
Totale valutazioni: 19



PROFILO PERSONALE - TIPO DI MATURITA'

classica:	4
linguistica:	2
tecnica-industriale:	2
scientifica:	10
magistrale:	1
N.R.:	0

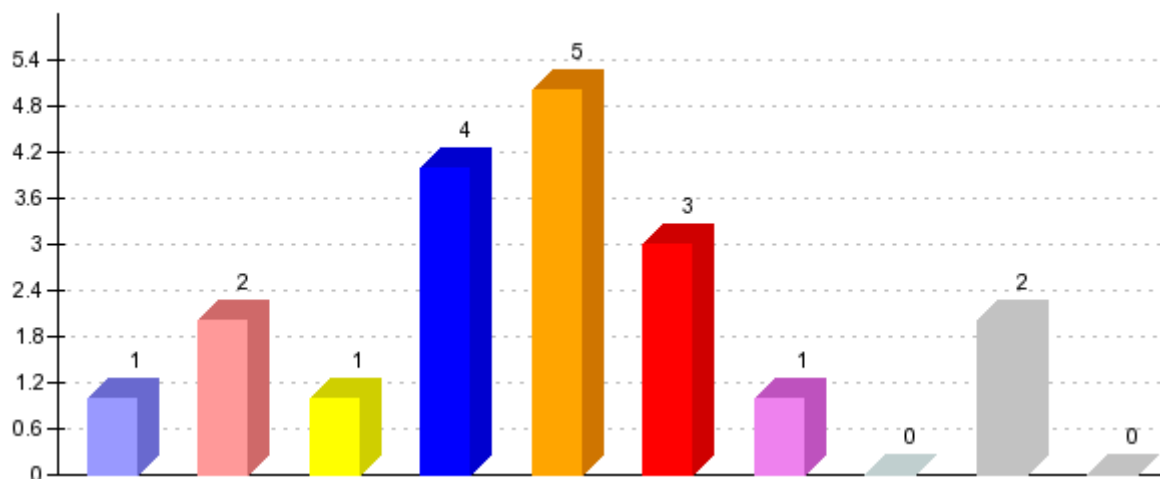
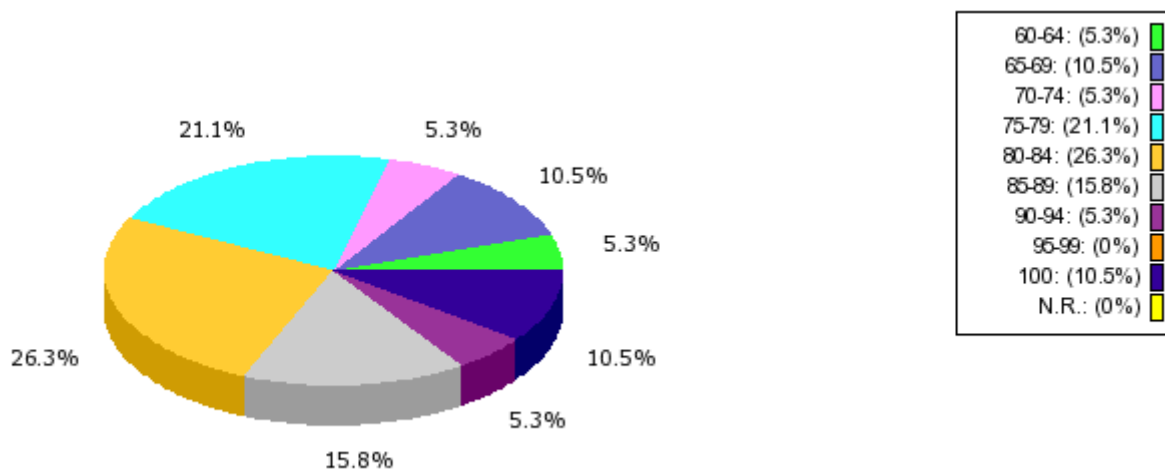
Totale valutazioni: 19



PROFILO PERSONALE - VOTO DI MATURITA'

60-64:	1
65-69:	2
70-74:	1
75-79:	4
80-84:	5
85-89:	3
90-94:	1
95-99:	0
100:	2
N.R.:	0

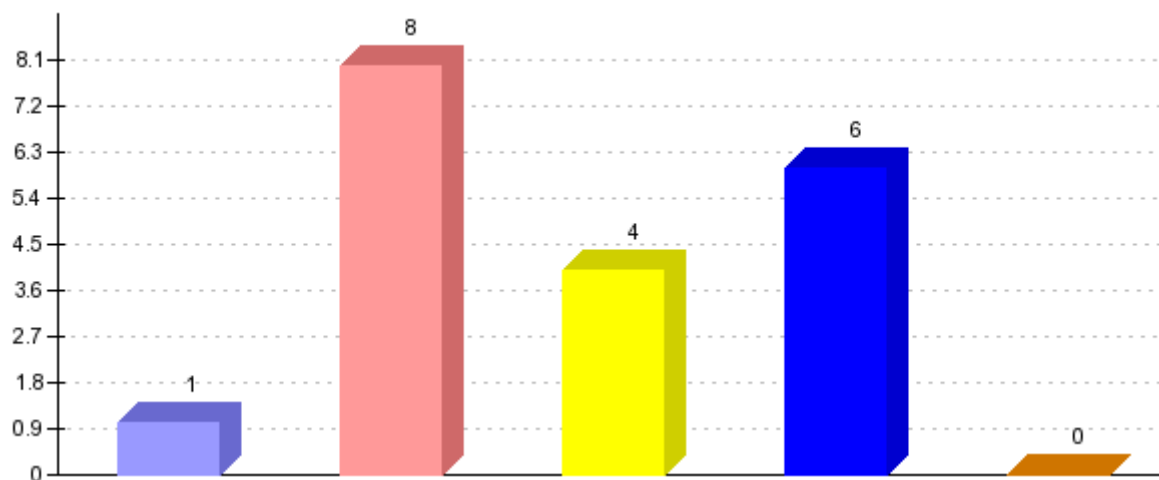
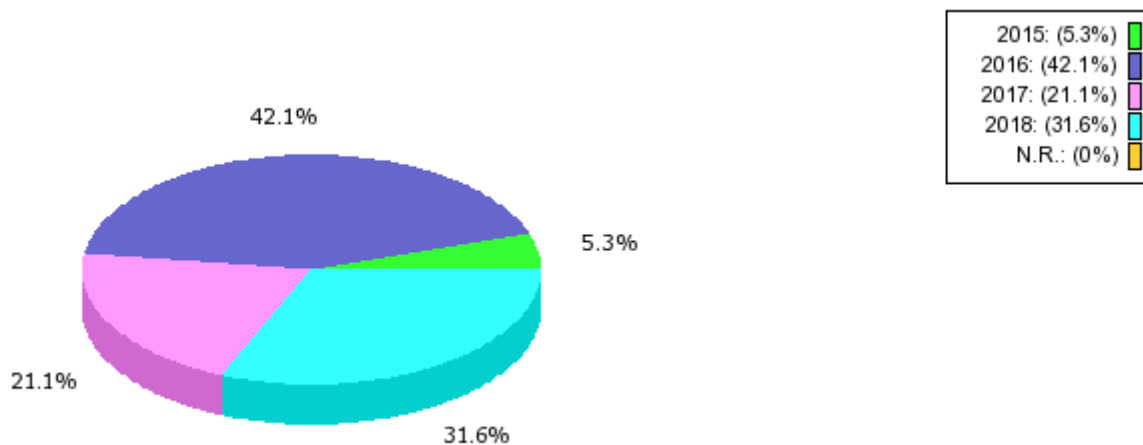
Totale valutazioni: 19



PROFILO PERSONALE - ANNO DI IMMATRICOLAZIONE

2015:	1
2016:	8
2017:	4
2018:	6
N.R.:	0

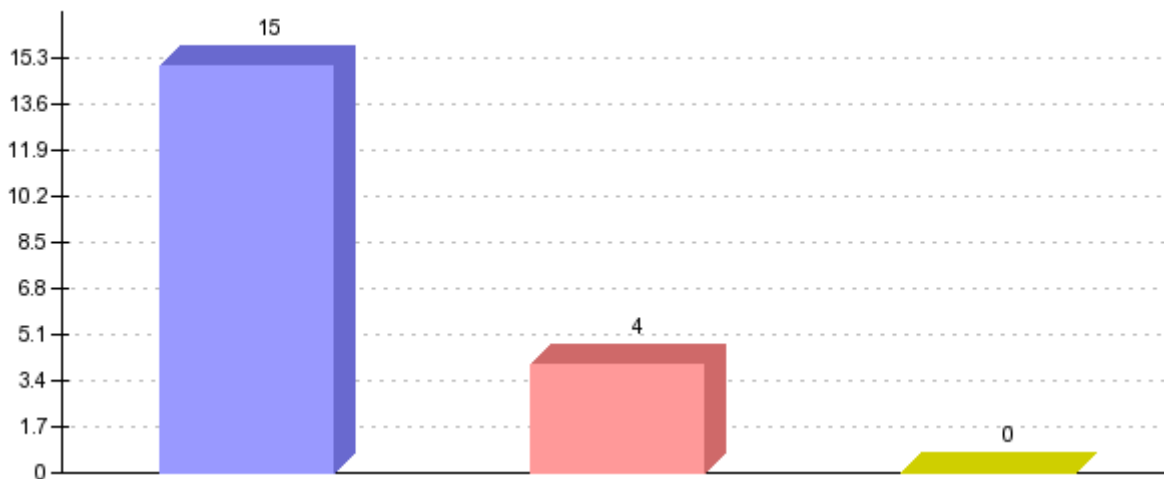
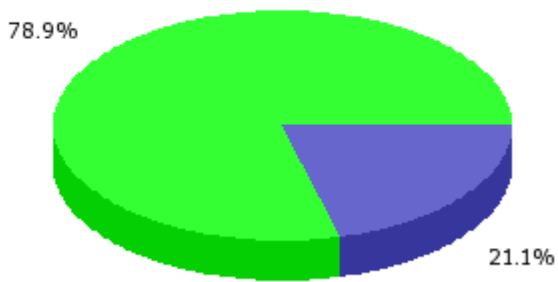
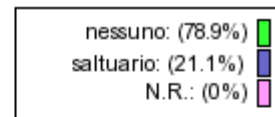
Totale valutazioni: 19



PROFILO PERSONALE - CONDIZIONE LAVORATIVA

nessuno: 15
saltuario: 4
N.R.: 0

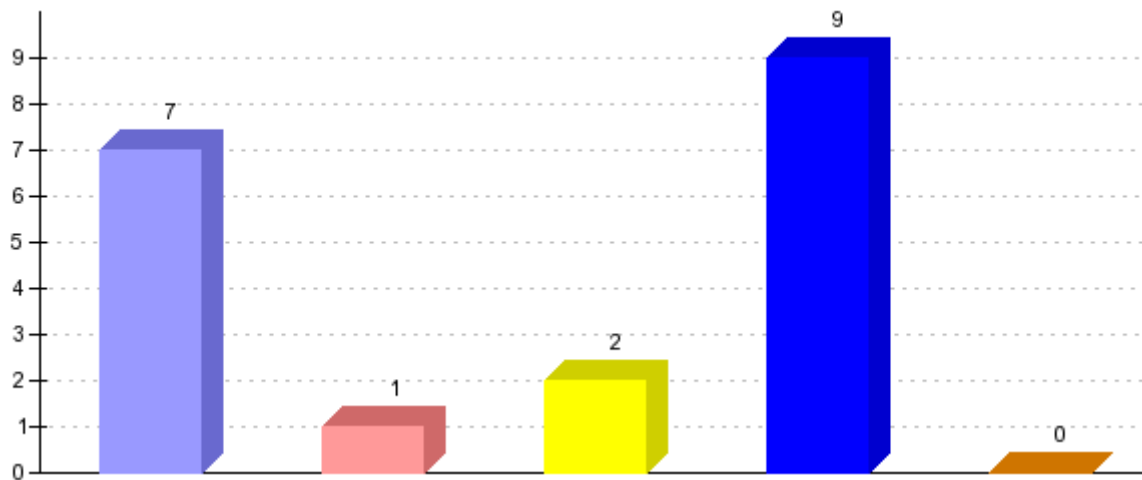
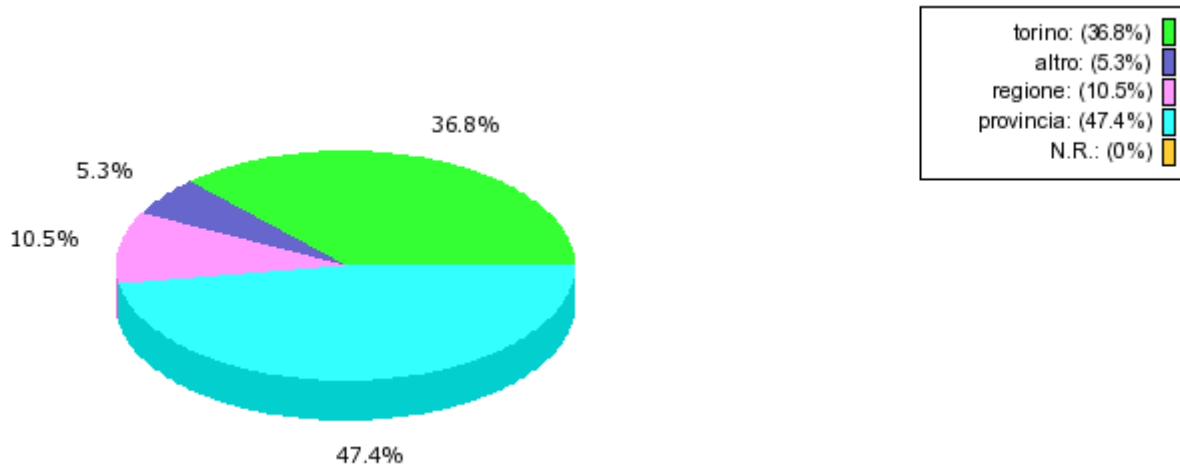
Totale valutazioni: 19



PROFILO PERSONALE - DOMICILIO

torino: 7
altro: 1
regione: 2
provincia: 9
N.R.: 0

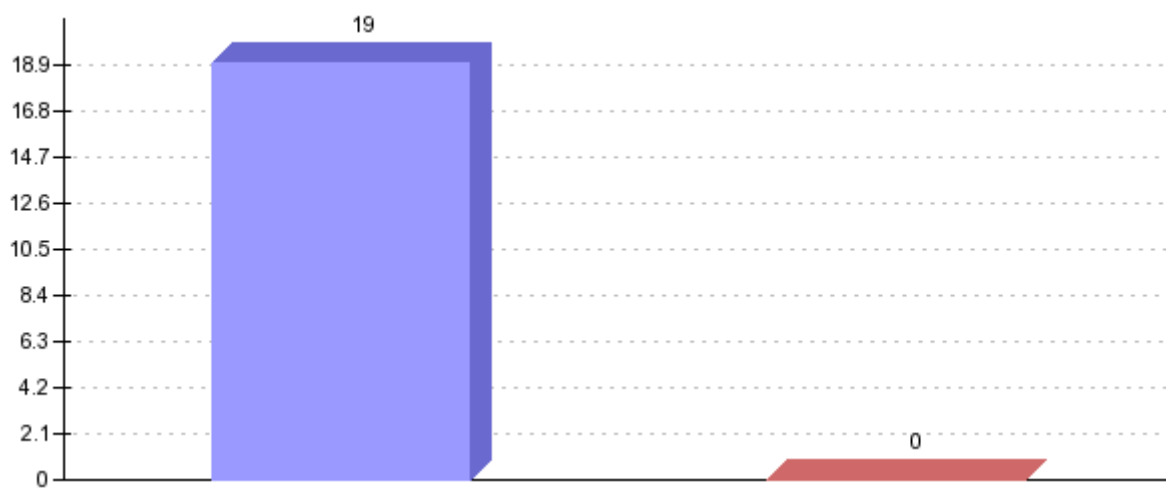
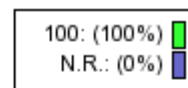
Totale valutazioni: 19



VITA UNIVERSITARIA - PERCENTUALE DI LEZIONI FREQUENTATE

100: 19
N.R.: 0

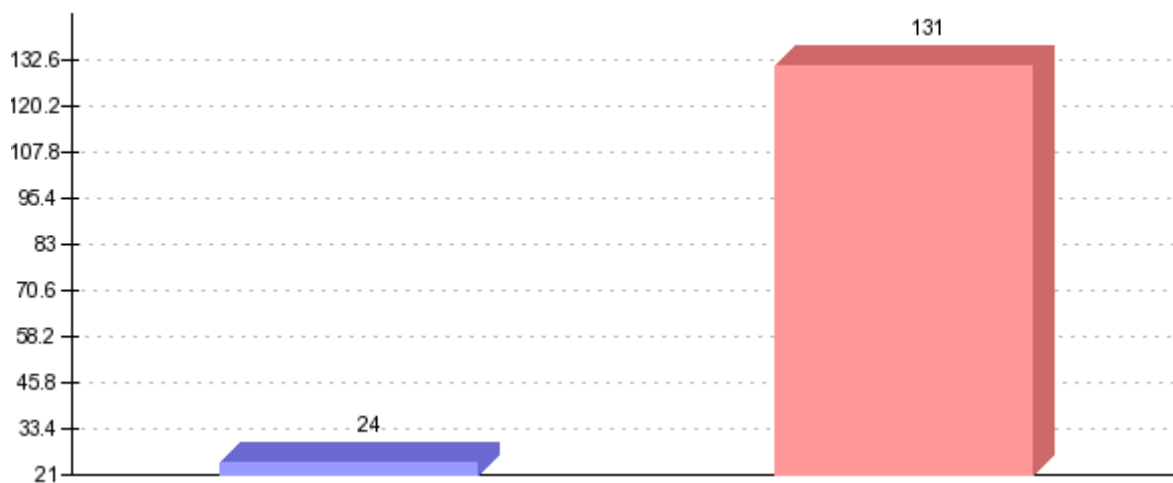
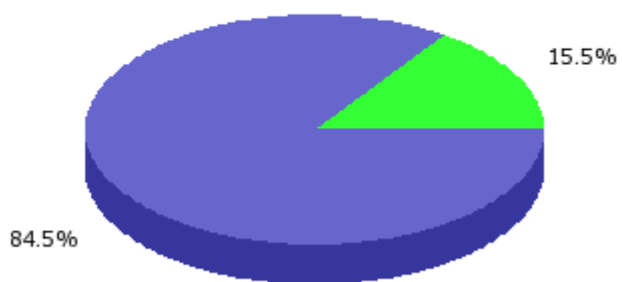
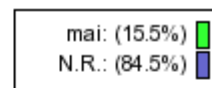
Totale valutazioni: 19



VITA UNIVERSITARIA - UTILIZZO DEL RICEVIMENTO STUDENTI

mai: 24
N.R.: 131

Totale valutazioni: 19

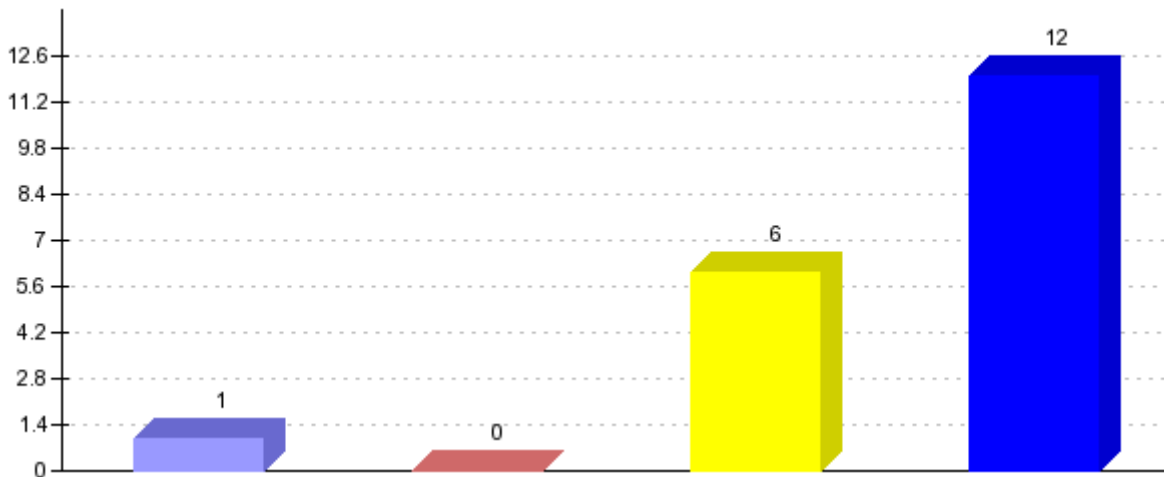
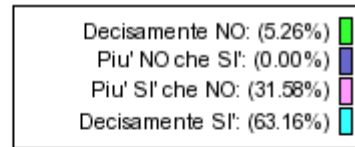
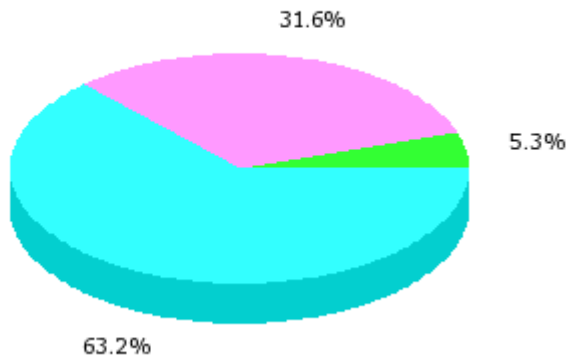
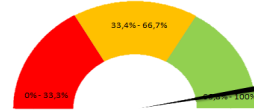


Domande questionario valutazione

Le aule in cui si svolgono le lezioni sono adeguate? (Si vede, si sente, si trova posto)
[Are the classroom facilities adequate? (visibility, acoustic, availability of seats)]

Somma giudizi: 19
Valore medio (*): 3.53
Valore medio (**): 0.68
Dev. Standard: 0.75

Soddisfazione: 94.74%

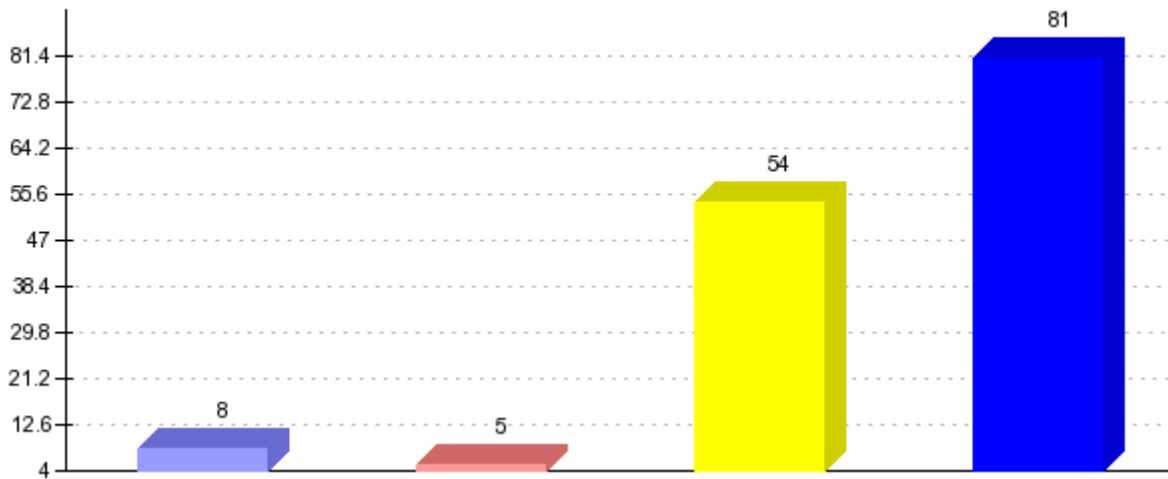
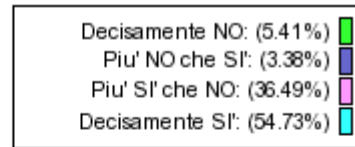
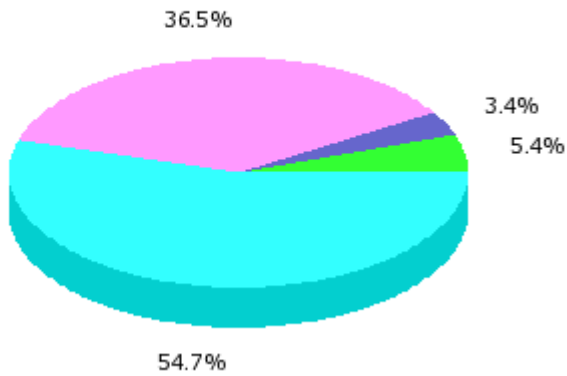
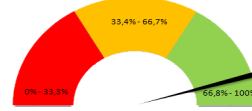


Domande questionario valutazione

Le conoscenze preliminari possedute sono risultate sufficienti per la comprensione degli argomenti previsti nel programma d'esame? [Was your basic knowledge sufficient to understand the contents of this course?]

Somma giudizi: 148
Valore medio (*): 3.41
Valore medio (**): 0.60
Dev. Standard: 0.80

Soddisfazione: 91.22%

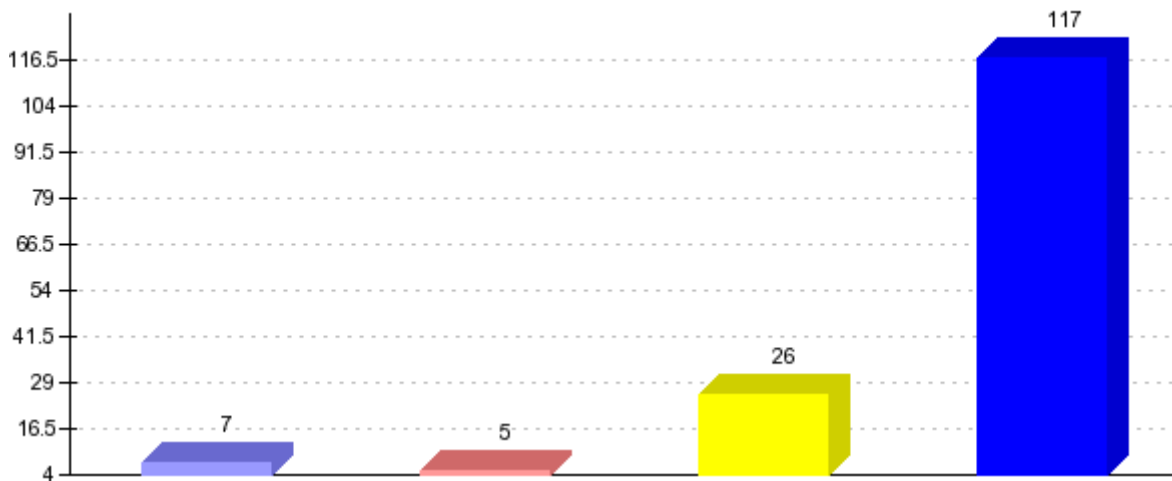
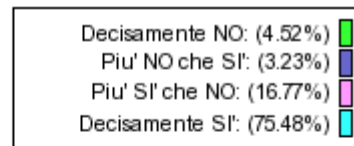
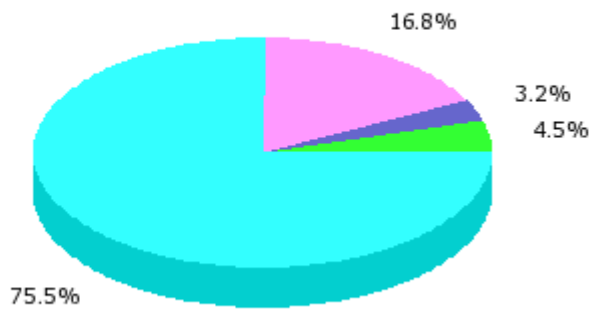
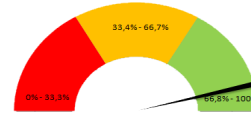


Domande questionario valutazione

Il carico di studio dell'insegnamento è proporzionato ai crediti assegnati? [Is the study workload proportionate to the credits earned?]

Somma giudizi: 155
 Valore medio (*): 3.63
 Valore medio (**): 0.75
 Dev. Standard: 0.75

Soddisfazione: 92.26%

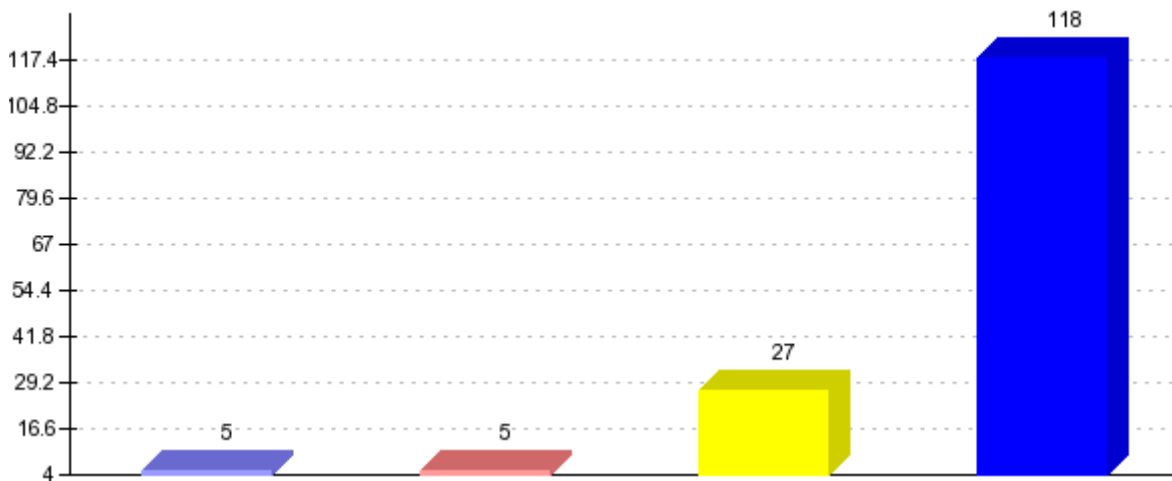
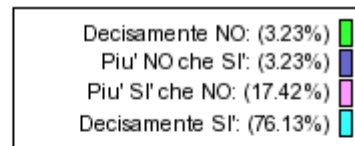
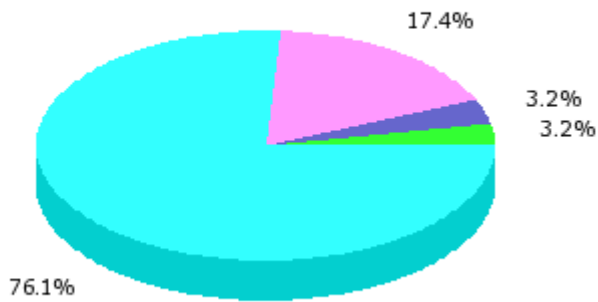
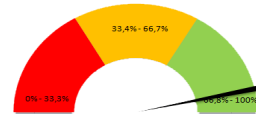


Domande questionario valutazione

Il materiale didattico (indicato e disponibile) è adeguato per lo studio della materia? [Is the learning material (suggested and available) suitable for studying for the exam?]

Somma giudizi: 155
 Valore medio (*): 3.66
 Valore medio (**): 0.78
 Dev. Standard: 0.69

Soddisfazione: 93.55%

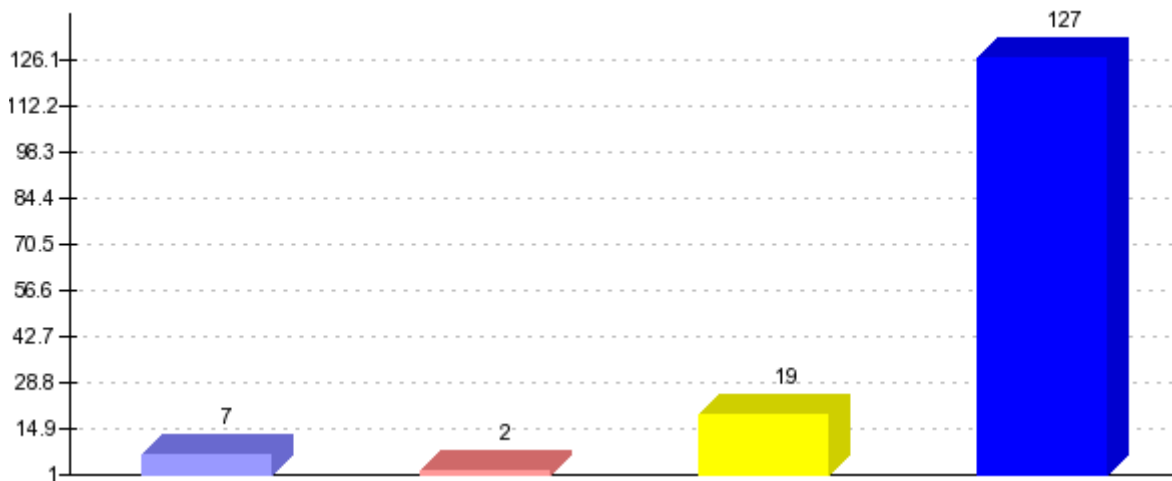
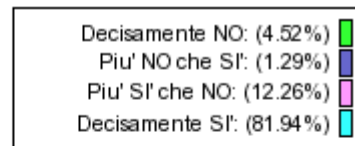
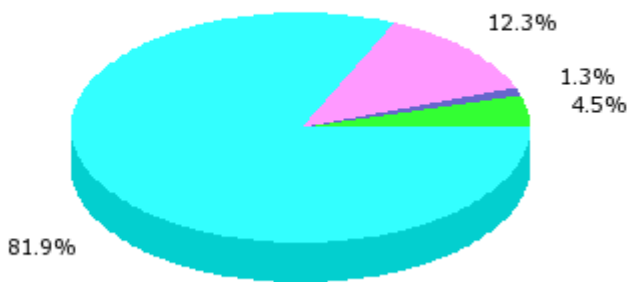
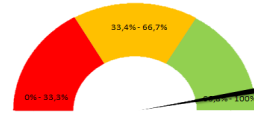


Domande questionario valutazione

Le modalità d'esame sono state definite in modo chiaro? [Were the exam evaluation procedures clearly defined?]

Somma giudizi: 155
 Valore medio (*): 3.72
 Valore medio (**): 0.81
 Dev. Standard: 0.71

Soddisfazione: 94.19%

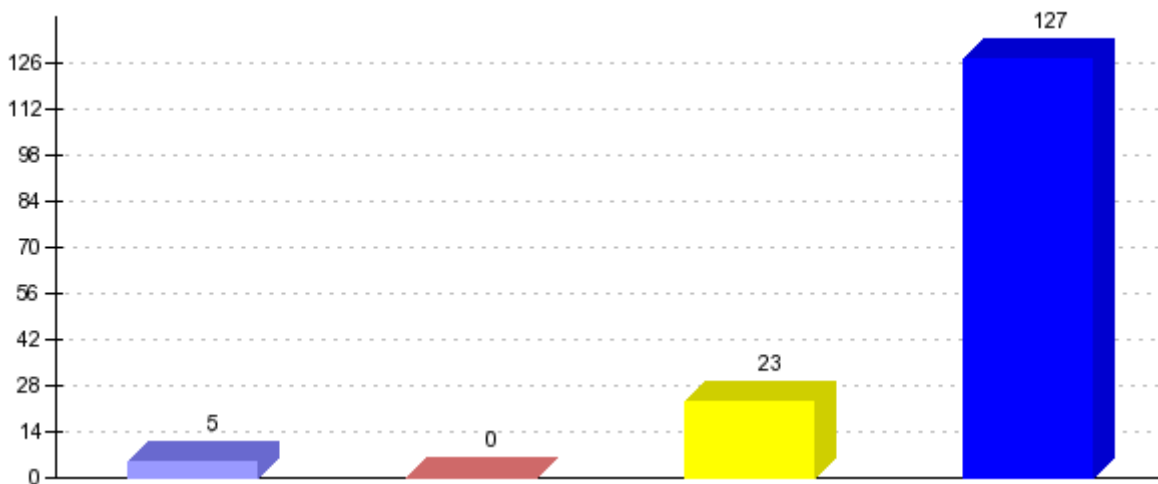
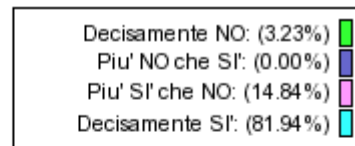
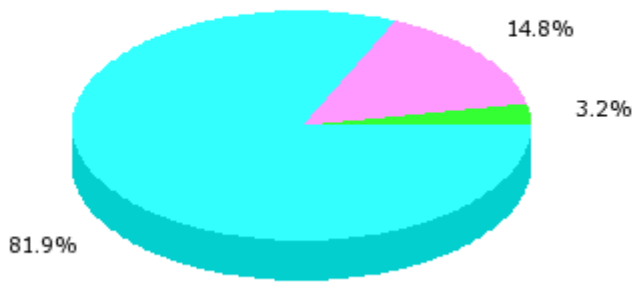
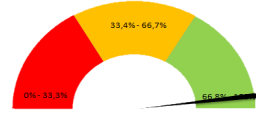


Domande questionario valutazione

Gli orari di svolgimento di lezioni, esercitazioni e altre eventuali attività didattiche sono rispettati? [Are lectures, exercises and other activities in line with pre-set schedules/timetables?]

Somma giudizi: 155
Valore medio (*): 3.75
Valore medio (**): 0.84
Dev. Standard: 0.62

Soddisfazione: 96.77%

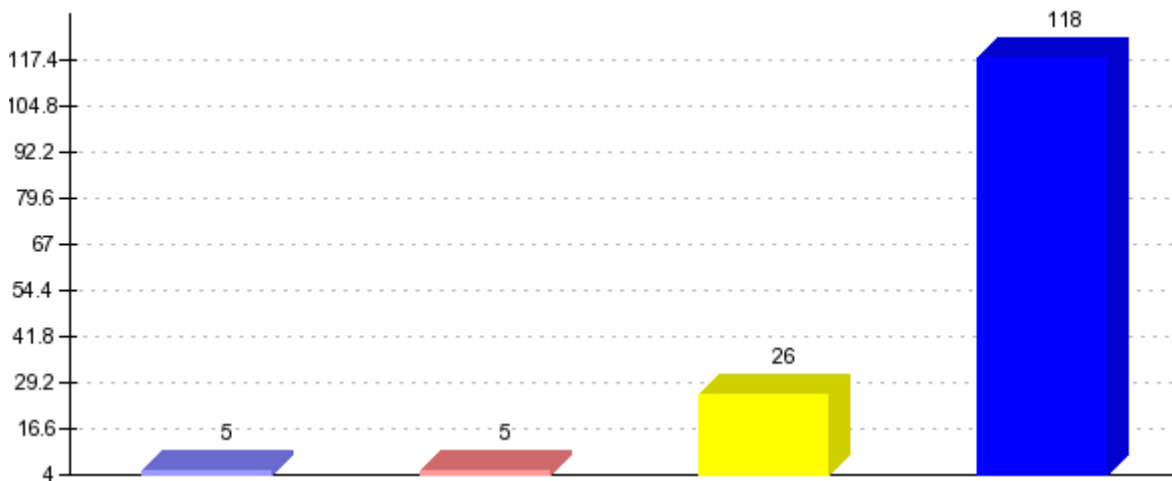
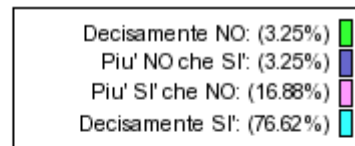
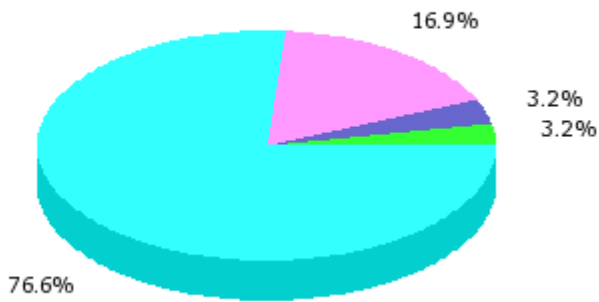
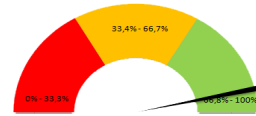


Domande questionario valutazione

Il docente stimola / motiva l'interesse verso la disciplina? [Does the professor stimulate your interest for this subject?]

Somma giudizi: 154
 Valore medio (*): 3.67
 Valore medio (**): 0.78
 Dev. Standard: 0.69

Soddisfazione: 93.51%

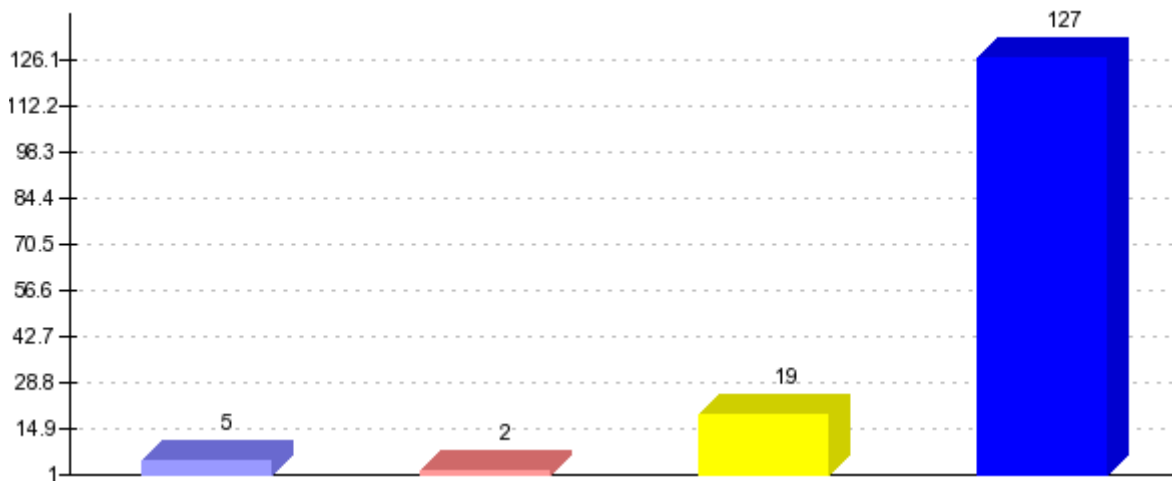
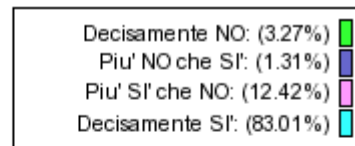
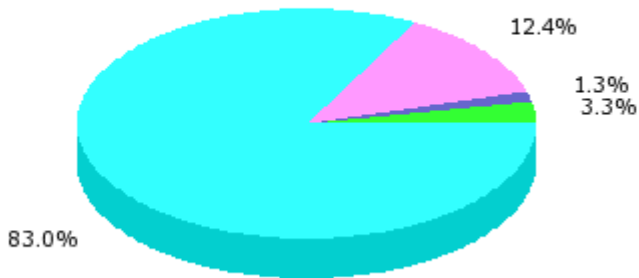
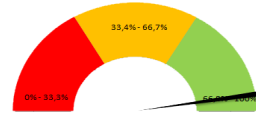


Domande questionario valutazione

Il docente espone gli argomenti in modo chiaro? [Does the professor clearly teach the contents of the course?]

Somma giudizi: 153
 Valore medio (*): 3.75
 Valore medio (**): 0.83
 Dev. Standard: 0.64

Soddisfazione: 95.42%

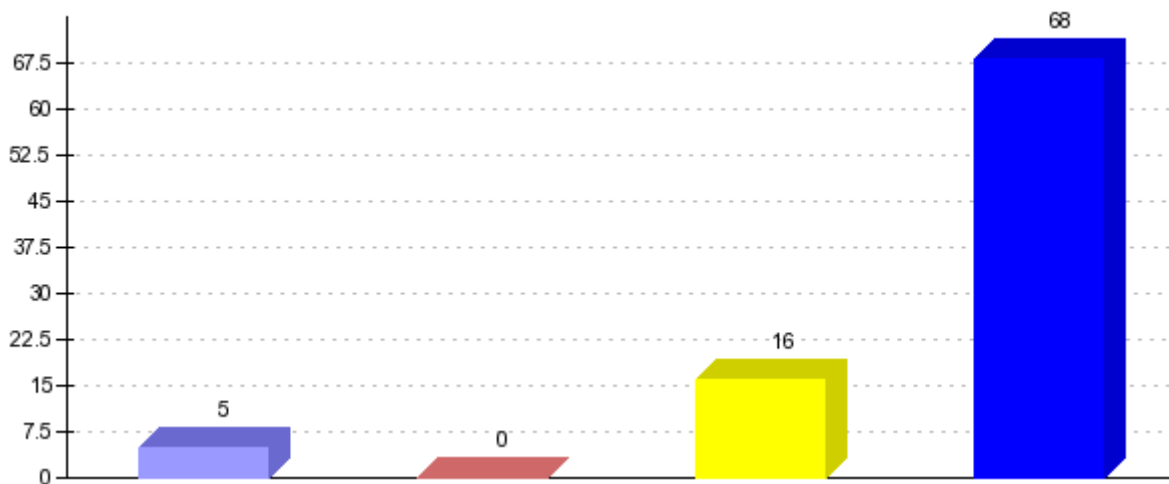
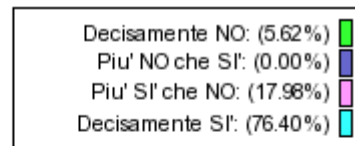
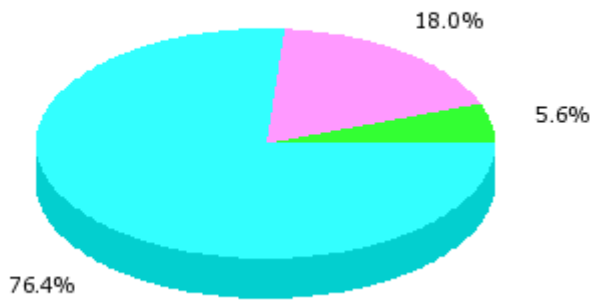
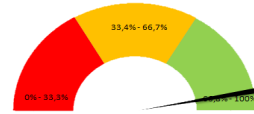


Domande questionario valutazione

Le attività didattiche integrative (esercitazioni, tutorati, laboratori, etc...), ove esistenti, sono utili all'apprendimento della materia? (non compilare se non pertinente) [Are the supplementary didactic activities (such as tutorials, labs, and workshops), if any, useful to learn the content of the course]

Somma giudizi: 89
Valore medio (*): 3.65
Valore medio (**): 0.77
Dev. Standard: 0.75

Soddisfazione: 94.38%



Domande questionario valutazione

L'insegnamento è stato svolto in maniera coerente con quanto dichiarato sul sito Web del corso di studio?

[Was the course carried out in a manner consistent with what was stated on the course syllabus published on the website?]

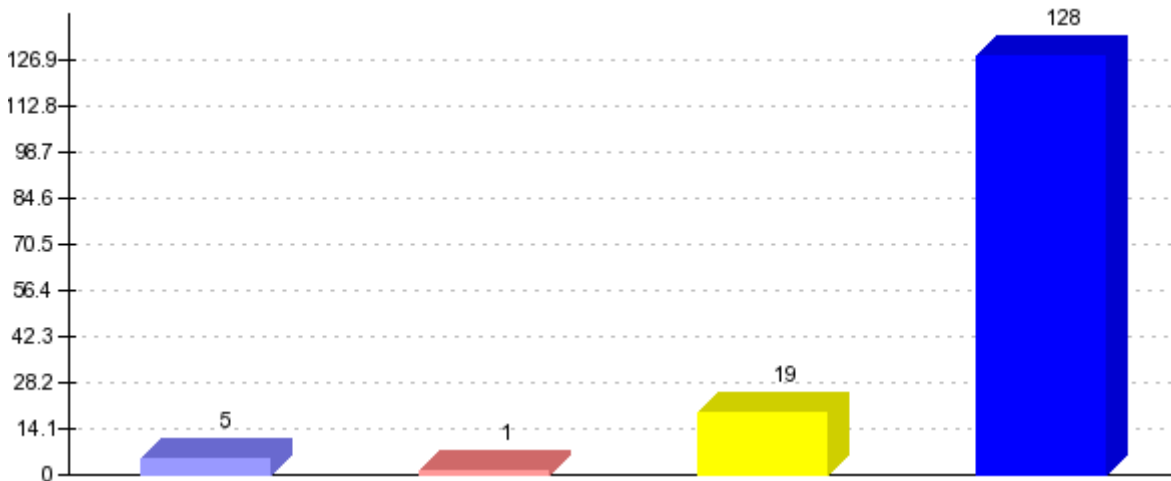
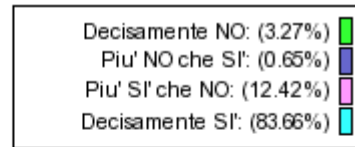
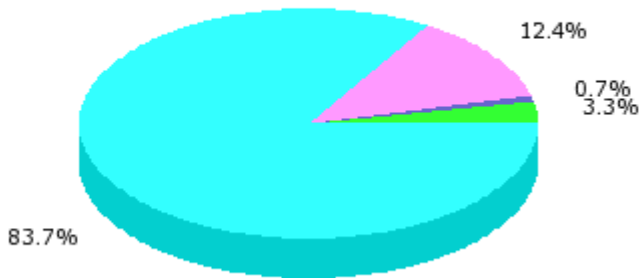
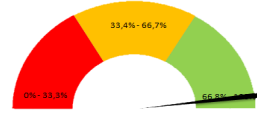
Somma giudizi: 153

Valore medio (*): 3.76

Valore medio (**): 0.84

Dev. Standard: 0.62

Soddisfazione: 96.08%

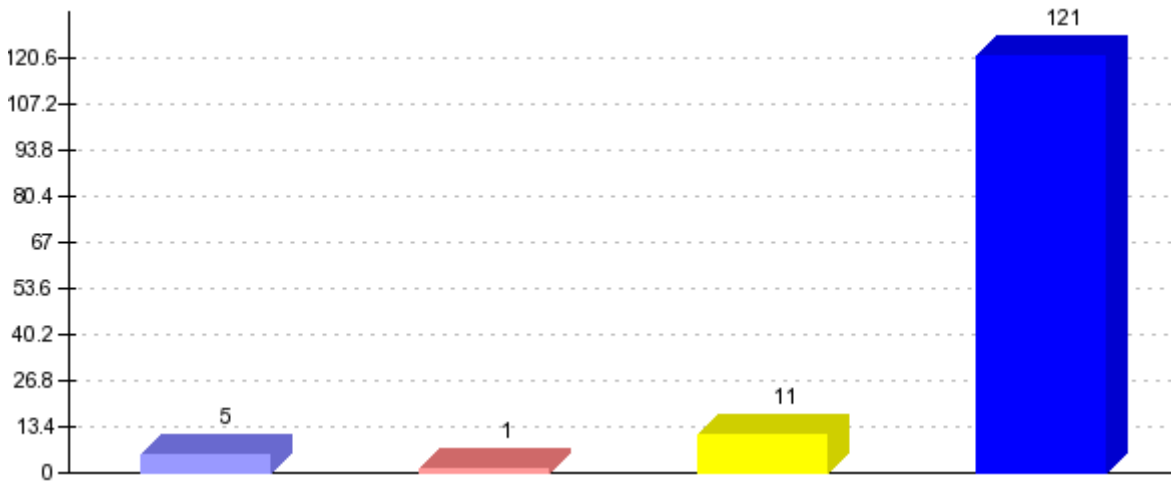
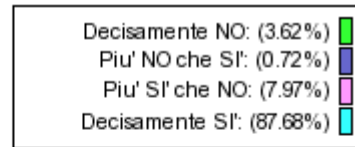
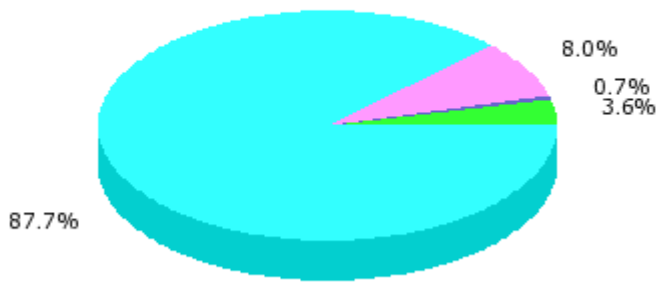
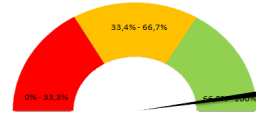


Domande questionario valutazione

Il docente è reperibile per chiarimenti e spiegazioni? [Is the professor available for further explanations if you need them?]

Somma giudizi: 138
Valore medio (*): 3.80
Valore medio (**): 0.86
Dev. Standard: 0.63

Soddisfazione: 95.65%

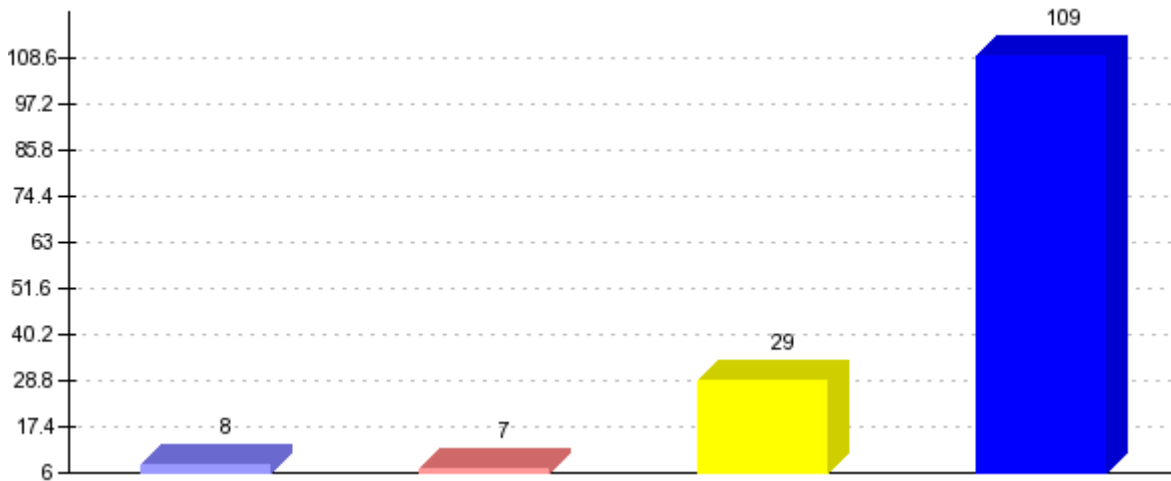
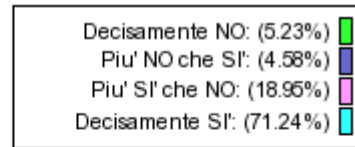
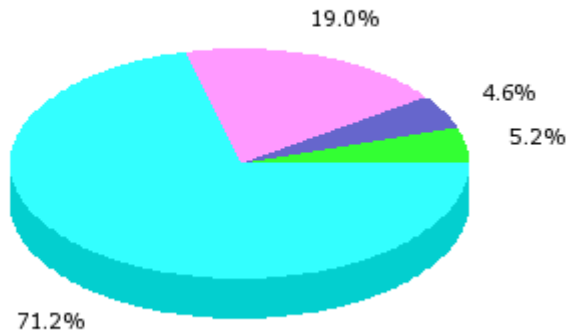
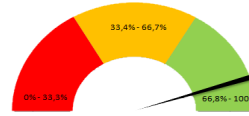


Domande questionario valutazione

E' interessato/a agli argomenti trattati nell'insegnamento? [Are you interested in the contents of this course?]

Somma giudizi: 153
Valore medio (*): 3.56
Valore medio (**): 0.71
Dev. Standard: 0.81

Soddisfazione: 90.20%

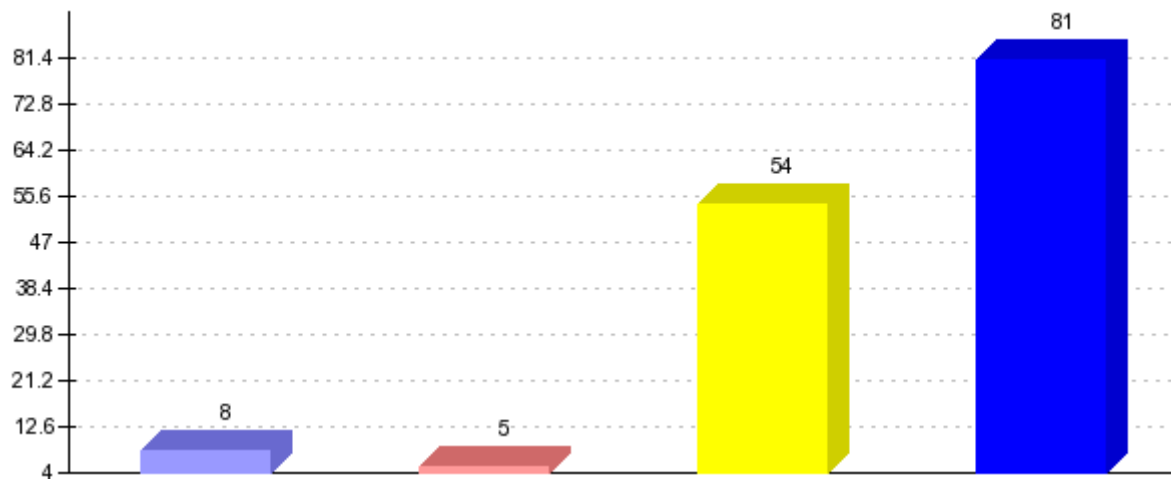
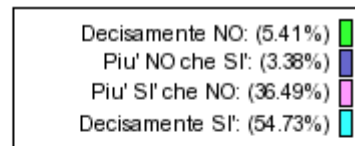
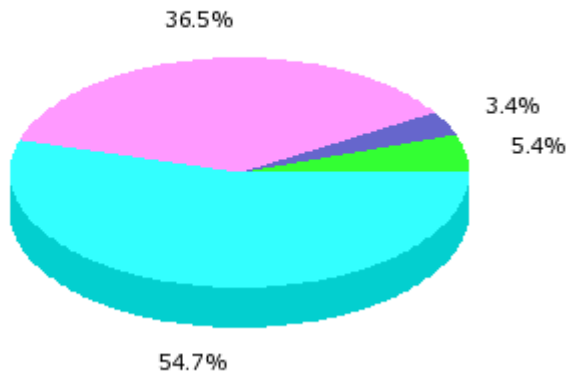
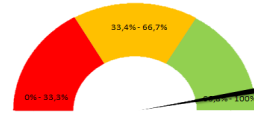


Domande aggiuntive di CdS

Gli obiettivi di tirocinio sono stati esplicitati dal tutor in modo chiaro e comprensibile? [Were the internship goals clearly defined?]

Somma giudizi: 17
Valore medio (*): 3.71
Valore medio (**): 0.80
Dev. Standard: 0.57

Soddisfazione: 94.12%

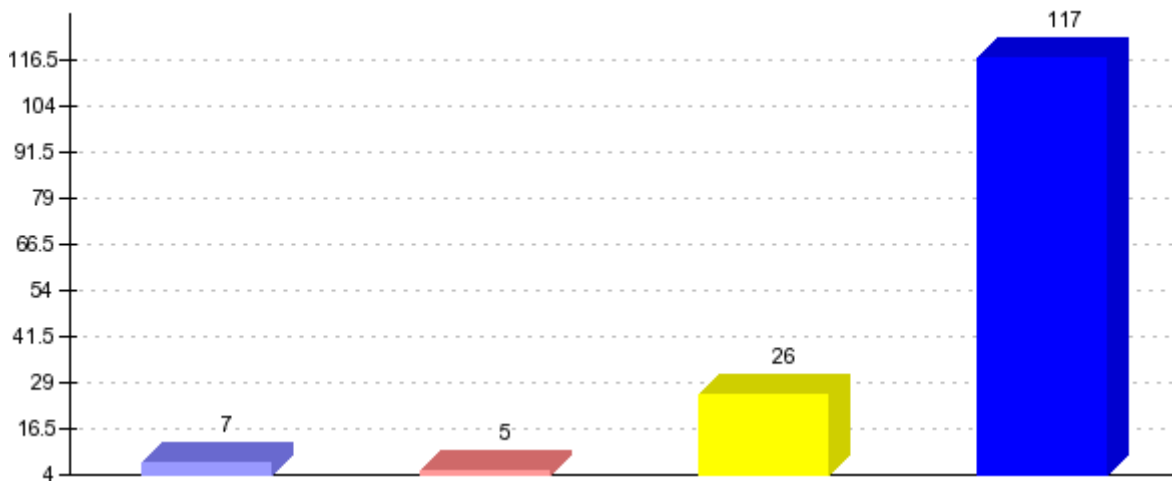
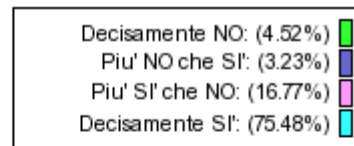
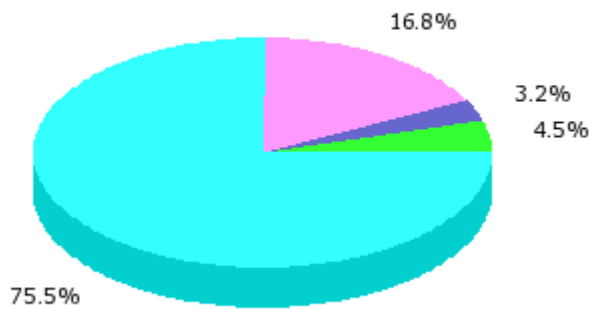
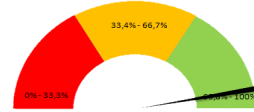


Domande aggiuntive di CdS

Durante lo svolgimento delle attività di tirocinio ti sei sentito coinvolto e valorizzato dal tutor? [Were you involved and appreciated by your tutor?]

Somma giudizi: 17
Valore medio (*): 3.47
Valore medio (**): 0.65
Dev. Standard: 0.61

Soddisfazione: 94.12%

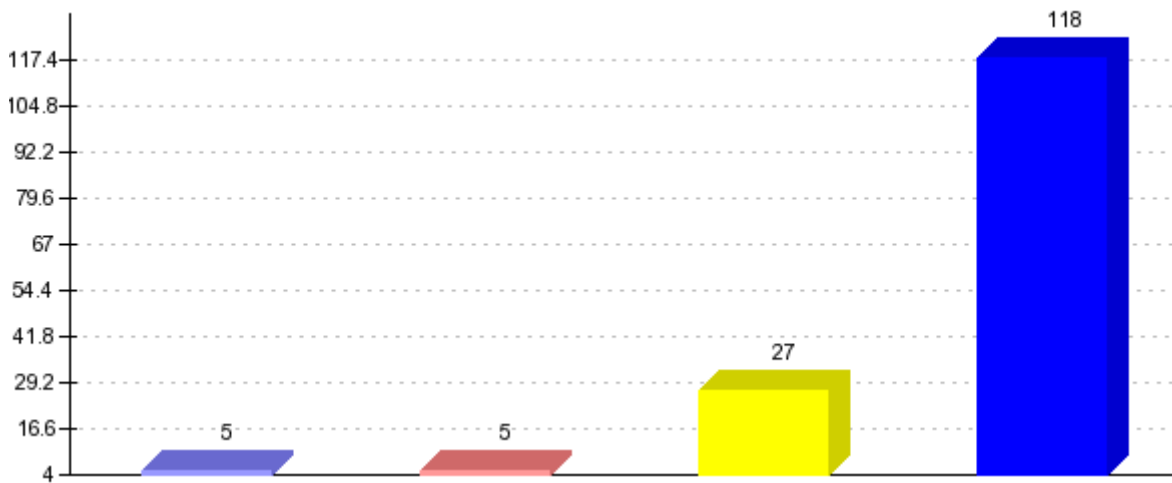
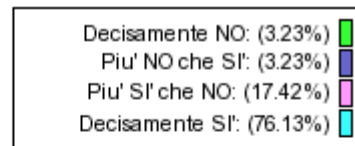
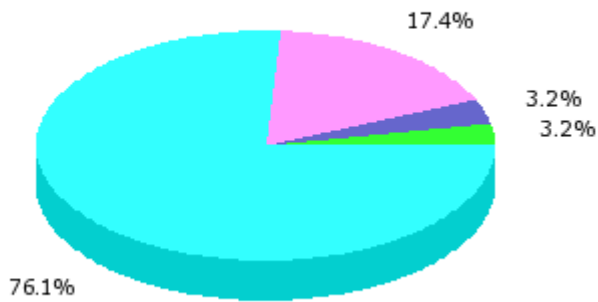
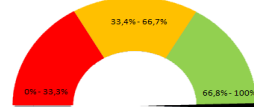


Domande aggiuntive di CdS

I tutor hanno garantito la loro disponibilità professionale? [Were the tutors available if you needed anything?]

Somma giudizi: 17
 Valore medio (*): 3.82
 Valore medio (**): 0.88
 Dev. Standard: 0.38

Soddisfazione: 100.00%

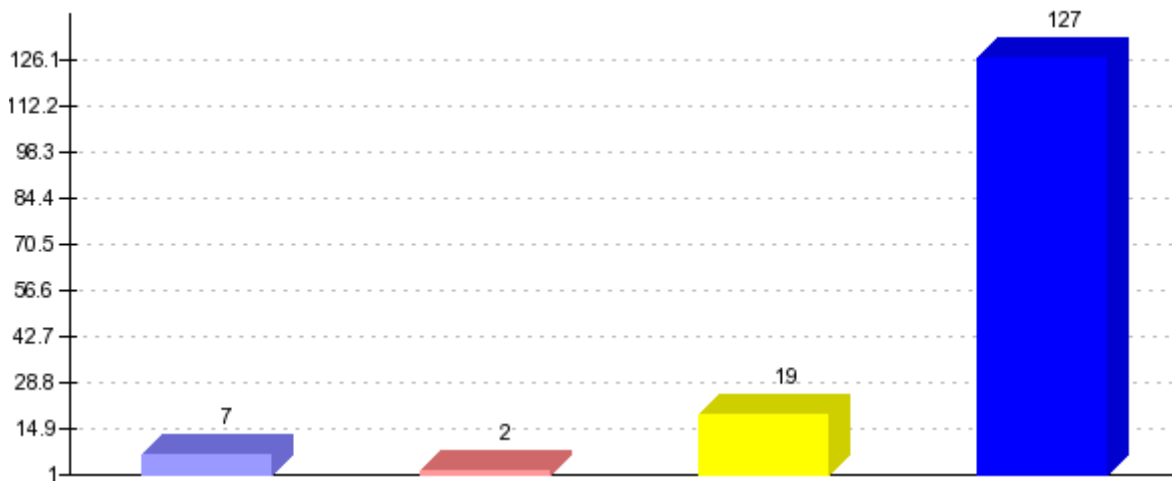
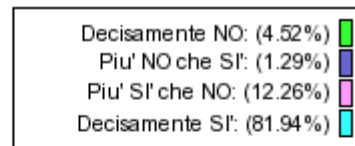
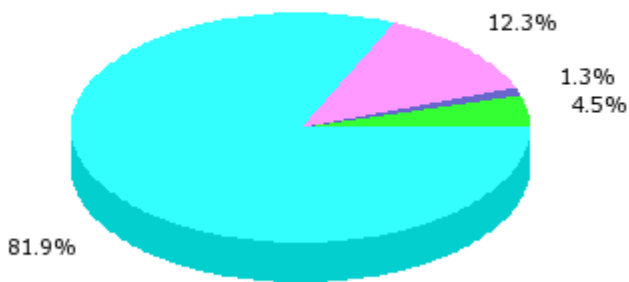
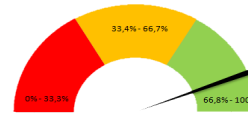


Domande aggiuntive di CdS

Secondo le tue aspettative, la valutazione delle attivit  di tirocinio   stata adeguata? [According to your expectations, were the internship activities properly assessed?]

Somma giudizi: 17
 Valore medio (*): 3.65
 Valore medio (**): 0.76
 Dev. Standard: 0.68

Soddisfazione: 88.24%



Domande aggiuntive di CdS

Il coordinatore ha garantito una organizzazione delle attività di tirocinio adeguate anche alle esigenze dello studente? [Did the coordinator plan the internship activities consistently with the student's needs?]

Somma giudizi: 17
Valore medio (*): 3.71
Valore medio (**): 0.80
Dev. Standard: 0.46

Soddisfazione: 100.00%

